

Brunswick County

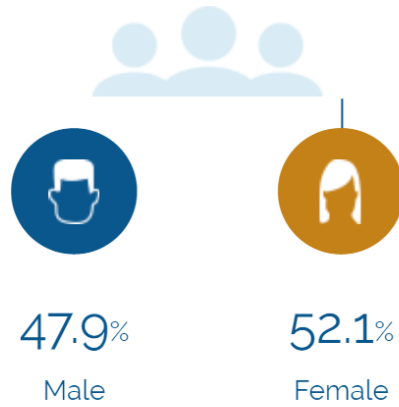
People



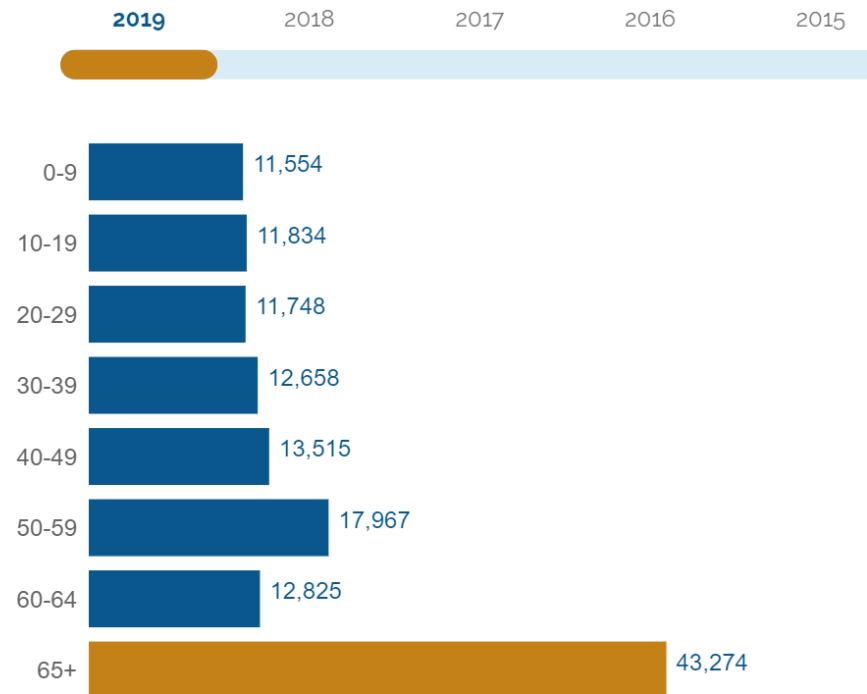
The total population of Brunswick County is 135,375. The median age is 53.09

135,375

Total Population



Age Distribution



Median Age

53

Labor Force

Brunswick County has a labor force of 59,038 people, with an unemployment rate of 5.3%.

59,038

Labor Force

5.3%

Unemployment Rate

▲ 0.5%

Unemployment Rate
Change (1 year)

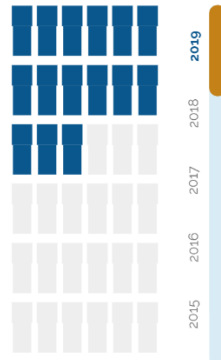
Talent

Where are the top jobs by occupation?



Total Employees

36,214



The work distribution of total employees in Brunswick County is:



40%

Blue Collar



59%

White Collar

Total Establishments

4,671



Income and Spending



Households in Brunswick County earn a median yearly income of 57,438. 36.28% of the households earn more than the national average each year. Household expenditures average 51,883 per year. The majority of earnings get spent on Shelter, Transportation, Food and Beverages, Health Care, and Utilities.

\$57,438

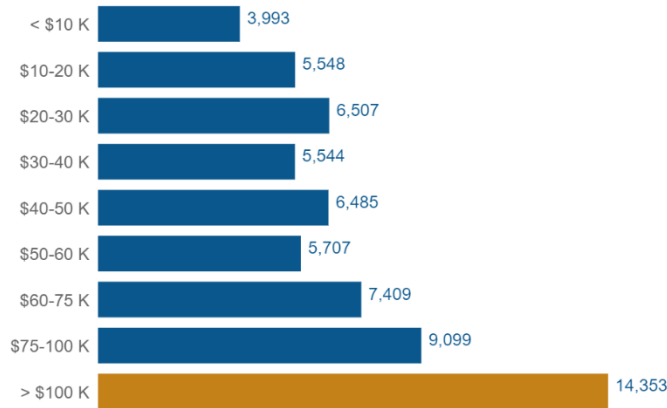
Median Household Income

0% more than the county

1% more than the state

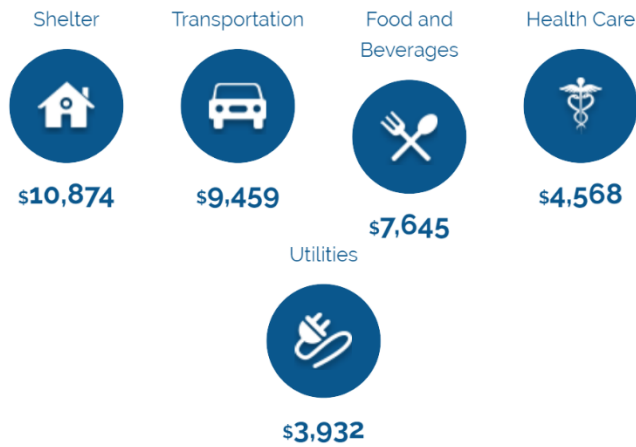
10% less than the nation

Income Distribution



How do people spend most of their money?

PER HOUSEHOLD



\$51,883

Median Household Expenditure

Educational Attainment



40.21% of the population in Brunswick County have an Associate's degree or higher. 89.91% have a high school degree or higher.



< Grade 9
3.04%



Grade 9-12
7.05%



High School
26.98%



Some College
22.72%



Assoc Degree
10.4%



Bach Degree
19.24%



Grad Degree
10.57%



offer Associate's Degree or Certificate

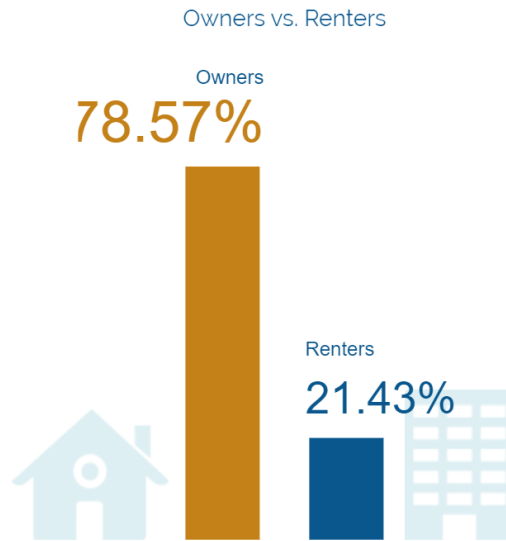


offer Bachelor's Degree or Higher

Housing



There are 267% more households who own their homes than there are renters.



Transportation



Residents spend an average of 24 minutes commuting to work. Brunswick County is served by 22 airports within 50 miles. Rail can be accessed within the community. Interstates can be accessed 1 miles away.



24min

Commute Travel Time



2 + 22(+50 miles)

Airports in Community



1miles

Distance to Interstate



Freight Rail

In Community

Taxes



Top State Corporate Income Tax

2.5%

Top State Corporate Capital Gains Tax

5%

Top State Personal Income Tax

5.25%

Top State Personal Capital Gains Tax

5.8%

State Sales Tax

4.75%