

# New Hanover County

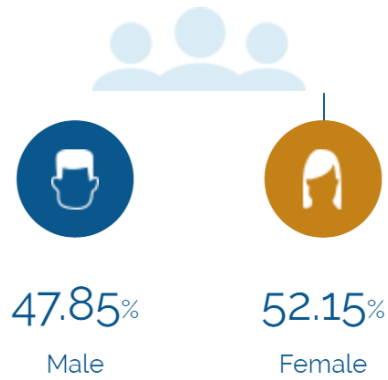
## People



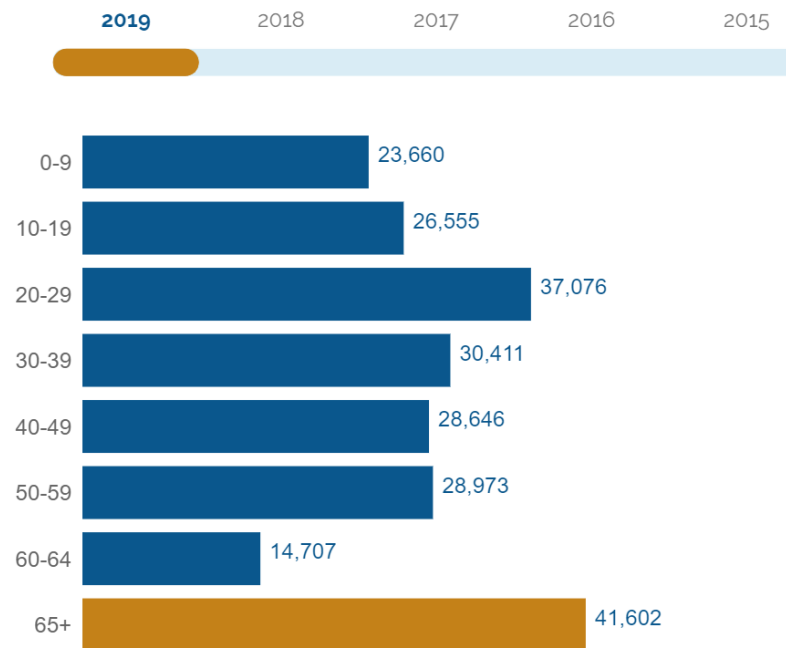
The total population of New Hanover County is 231,630. The median age is 38.38

# 231,630

Total Population



### Age Distribution



### Median Age

# 38

# New Hanover County

## Labor Force

New Hanover County has a labor force of 122,488 people, with an unemployment rate of 3.8%.

122,488

Labor Force

3.8%

Unemployment Rate

▲ 0.2%

Unemployment Rate  
Change (1 year)

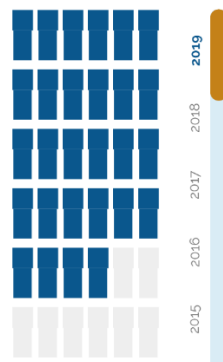
## Talent

Where are the top jobs by occupation?



Total Employees

123,265



The work distribution of total employees in New Hanover County is:



37%

Blue Collar



62%

White Collar

Total Establishments

12,682



## Income and Spending



Households in New Hanover County earn a median yearly income of 58,164. 38,32% of the households earn more than the national average each year. Household expenditures average 57,167 per year. The majority of earnings get spent on Shelter, Transportation, Food and Beverages, Health Care, and Utilities.

### \$58,164

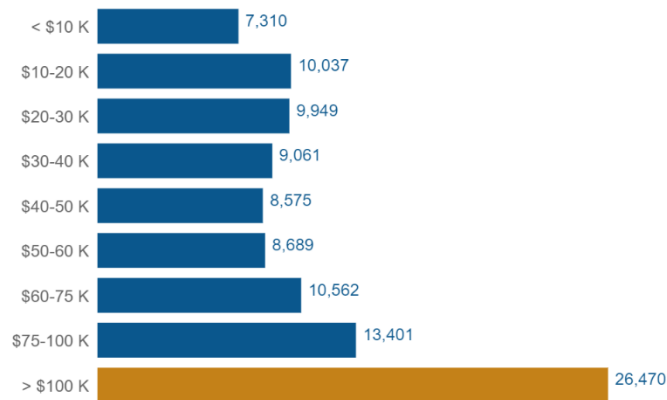
Median Household Income

0% more than the county

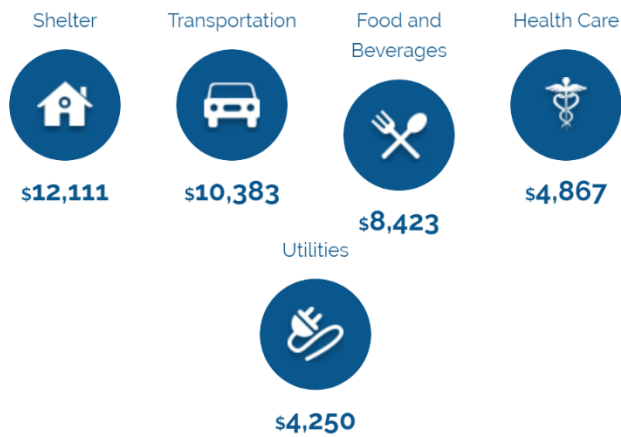
3% more than the state

9% less than the nation

### Income Distribution



### How do people spend most of their money? PER HOUSEHOLD



### \$57,167

Median Household Expenditure

## Educational Attainment



50.54% of the population in New Hanover County have an Associate's degree or higher. 41.05% have a Bachelor's degree or higher.



< Grade 9

**2.24%**



Grade 9-12

**4.73%**



High School

**21.4%**



Some College

**21.09%**



Assoc Degree

**9.49%**



Bach Degree

**27.43%**



Grad Degree

**13.62%**



offer Associate's Degree or Certificate

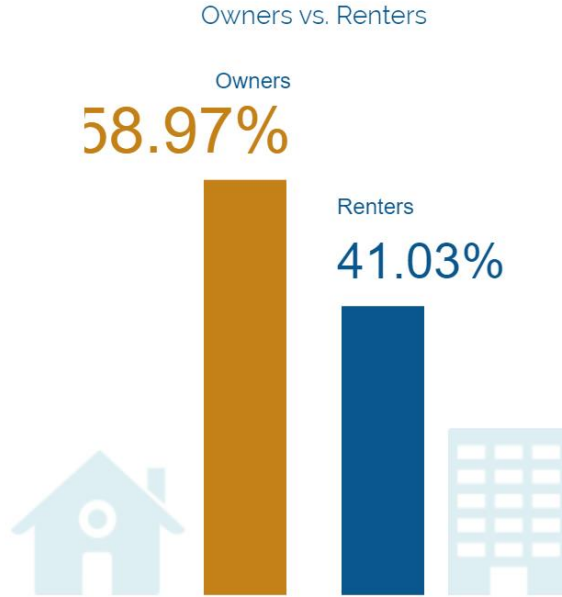


offer Bachelor's Degree or Higher

## Housing



There are 44% more households who own their homes than there are renters.



## Transportation



Residents spend an average of 20 minutes commuting to work. New Hanover County is served by 16 airports within 50 miles. Rail can be accessed within the community. Interstates can be accessed within the community.



20min

Commute Travel Time



1 + 16(+50 miles)

Airports in Community



Interstate

In Community



Freight Rail

In Community

## Taxes



Top State Corporate Income Tax

2.5%

Top State Corporate Capital Gains Tax

5%

Top State Personal Income Tax

5.25%

Top State Personal Capital Gains Tax

5.8%

State Sales Tax

4.75%