

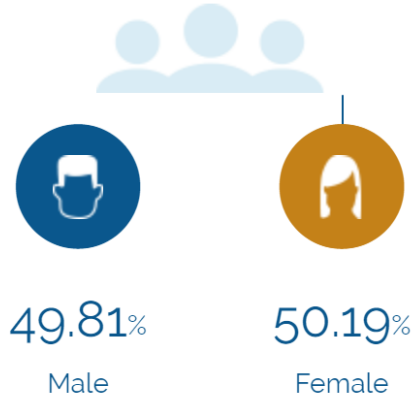
People



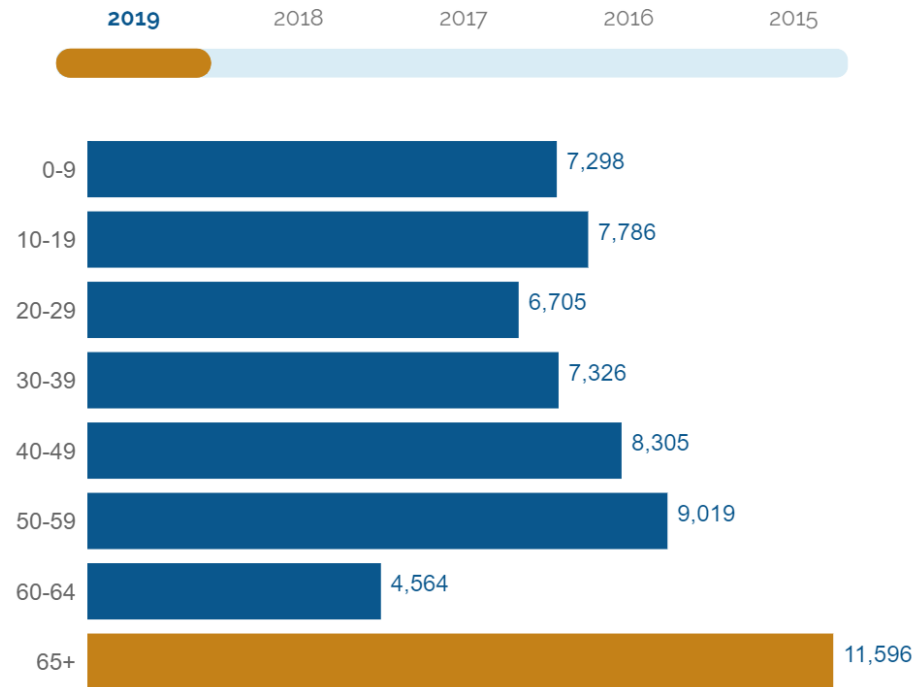
The total population of Pender County is 62,599. The median age is 41.74

62,599

Total Population



Age Distribution



Median Age

42

Labor Force

Pender County has a labor force of 29,841 people, with an unemployment rate of 4.4%.

29,841

Labor Force

4.4%

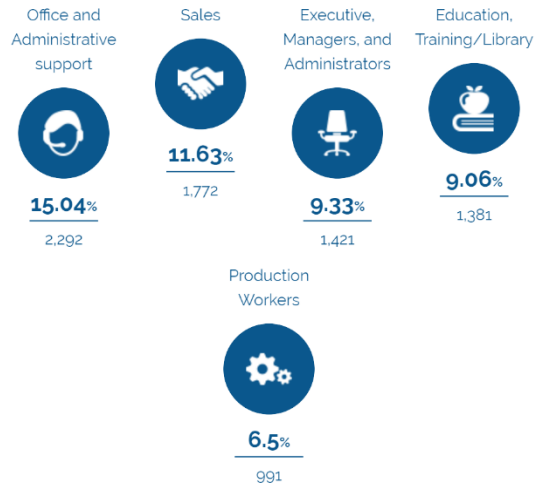
Unemployment Rate

▲ 0.4%

Unemployment Rate
Change (1 year)

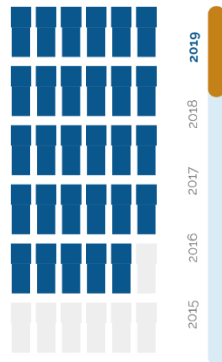
Talent

Where are the top jobs by occupation?



Total Employees

15,238



The work distribution of total employees in Pender County is:



Total Establishments

1,849



Income and Spending



Households in Pender County earn a median yearly income of 55,274. 36.34% of the households earn more than the national average each year. Household expenditures average 52,330 per year. The majority of earnings get spent on Shelter, Transportation, Food and Beverages, Health Care, and Utilities.

\$55,274

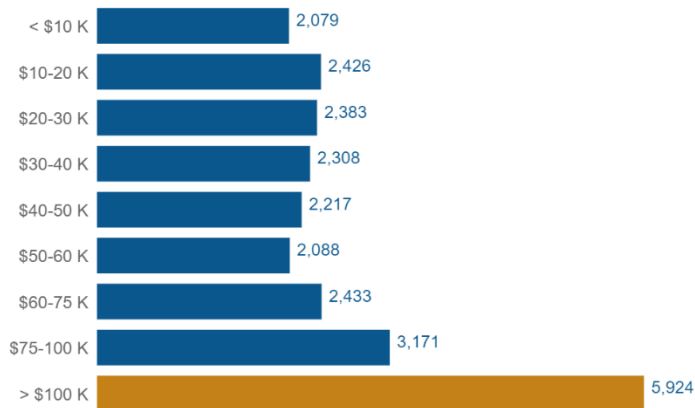
Median Household Income

0% more than the county

2% less than the state

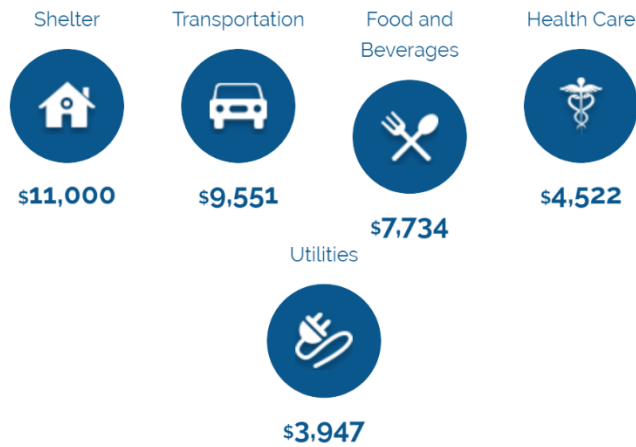
13% less than the nation

Income Distribution



How do people spend most of their money?

PER HOUSEHOLD



\$52,330

Median Household Expenditure

Educational Attainment



37.79% of the population in Pender County have an Associate's degree or higher. 87.86% have a high school degree or higher.



< Grade 9
3.88%



Grade 9-12
8.26%



High School
28.7%



Some College
21.37%



Assoc Degree
10.52%



Bach Degree
17.09%



Grad Degree
10.18%



offer Associate's Degree or Certificate

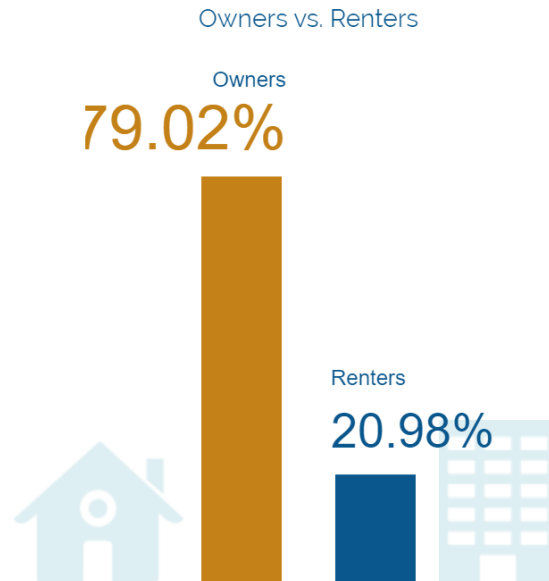


offer Bachelor's Degree or Higher

Housing



There are 277% more households who own their homes than there are renters.



Transportation



Residents spend an average of 28 minutes commuting to work. Pender County is served by 23 airports within 50 miles. Rail can be accessed within the community. Interstates can be accessed within the community.



28min

Commute Travel Time



1 + 23(+50 miles)

Airports in Community



Interstate

In Community



Freight Rail

In Community

Taxes



Top State Corporate Income Tax

2.5%

Top State Corporate Capital Gains Tax

5%

Top State Personal Income Tax

5.25%

Top State Personal Capital Gains Tax

5.8%

State Sales Tax

4.75%